

GRAFHAM WATER SAILING CLUB - EVENT APPENDIX

RS400 & RS800 Inland Championships part of the Rooster National Tour – v2 with changes highlighted

5th & 6th October 2019

The RS Racing Circuit Sailing Instructions 2019 shall apply except as modified by this Event Appendix.

COMPETITORS BRIEFING - Saturday 5th October 2019 at 11:30 in the ground floor cafe.

2 Notices to competitors

2.1 The Official Notice Board is located in the ground floor cafe.

4 Signals made ashore

4.1 Signals made ashore will be displayed on flagpole 3 on the foreshore in front of the Clubhouse.

5 Format of racing

APLHA COURSE

		Start A	Start B
		RS400	RS800
Race 1	Saturday	1300 start	1304 start
Race 2, 3		Back to back with race 1	
Race 4	Sunday	1030 start	1034 start
Race 5 & 6		Back to back with race 4	

At the discretion of the Class Representative and the Race Officer, Race 4 may be sailed on Saturday if inclement weather forecasts for Sunday make this appropriate. This decision will be announced at the briefing.

On the last day of racing, no start will be signalled after 1500.

10 The start

10.1 Starts will be using 3 minute start sequences i.e. 3, 2, 1, Go. This changes 2019 RS Sailing Instruction 10.1. The warning signal for the next start will be made no less than 1 minute after the previous class start.

To alert boats that a race or sequence of races will begin soon, the orange starting line flag will be displayed with multiple sound signals at least one minute before the warning signal is made.

12 Change of the next leg of the course

12.1 To change the next leg of the course, the race committee will move a mark, move the finishing line or move the leeward gate. This changes 2019 RS Sailing Instructions 12.1.

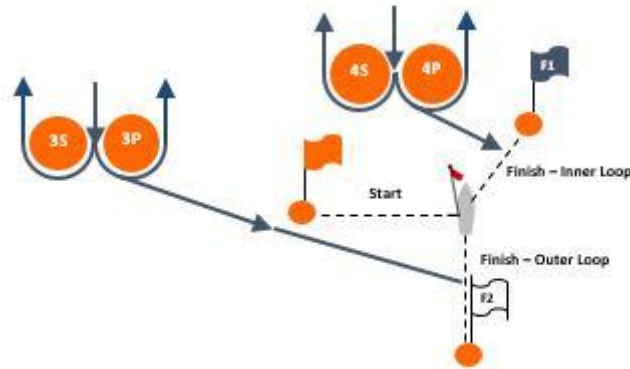
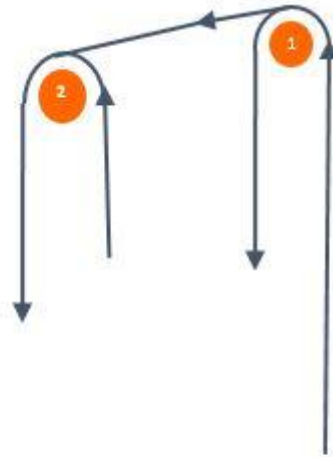
Marks may be moved by not more than 100 metres and/or 10 degrees without signalling. This changes RRS 33.

14 The finish

14.1 The finishing line will be between a staff displaying a BLUE flag on the committee boat and the finishing mark. This changes 2019 RS Sailing Instructions 14.1

EVENT APPENDIX A

THE COURSES



The course for each start will be displayed separately.

	RS400
COURSE	Mark Rounding Order
A1	Start, 1, 2, 3P then Finish between Committee Boat & F2
A2	Start, 1, 2, 3S & 3P, 2, 3P then Finish between Committee Boat & F2
A3	Start, 1, 2, 3S & 3P, 2, 3S & 3P, 2, 3P then Finish between Committee Boat & F2
A4	Start, 1, 2, 3S & 3P, 2, 3S & 3P, 2, 3S & 3P, 2, 3P then Finish between Committee Boat & F2

If 3S is not used then round 3P to port.

	RS800
COURSE	Mark Rounding Order
B1	Start, 1, 4P then Finish between Committee Boat & F1
B2	Start, 1, 4S & 4P, 1, 4P then Finish between Committee Boat & F1
B3	Start, 1, 4S & 4P, 1, 4S & 4P, 1, 4P then Finish between Committee Boat & F1
B4	Start, 1, 4S & 4P, 1, 4S & 4P, 1, 4S & 4P, 1, 4P then Finish between Committee Boat & F1

If 4S is not used then round 4P to port.

MARKS

Marks 1, 2, 3S, 3P, 4S & 4P will be ORANGE Pillar Buoys

The port-end start mark will be a Dan Buoy with an ORANGE flag

The Inner Loop port end finish mark will be a Dan Buoy (mark F1) with BLUE flag.

The Outer Loop port end finish mark will be a Dan Buoy (mark F2) with WHITE flag.

GRAFHAM SPECIFIC RULES

Entrants and authorised guests are temporary members of Grafham Water Sailing Club during the period of the event and shall comply with Club Rules and Bylaws. Failure to observe these may result in exclusion from the club premises.

MOVEMENT OF BOATS TO GRAFHAM WATER

In order to prevent the spread of non-native species there is a requirement to ensure that boats are clean before they visit the site using the principle of Check Clean Dry <http://www.nonnativespecies.org/checkcleandry/index.cfm>. This includes:

CHECK your equipment and clothing for live organisms – particularly in areas that are damp or hard to inspect.

CLEAN and wash equipment, footwear and clothing thoroughly. If you do come across any organisms, leave them at the water body where you found them.

DRY all equipment and clothing – some species can live for many days in moist conditions. Make sure you don't transfer water elsewhere.

Anglian Water ask for boats and equipment, arriving at Grafham Water that are from the following locations, to have been clean and dry for at least two days prior to arrival – if not, then they must not be launched at the Club:

Wraysbury Reservoir and Wraysbury River near to Staines

The Queen Mother Reservoir

Queen Elizabeth II/Bessborough Reservoirs Queen Mary Reservoir

Warwick East Reservoir, Warwick West Reservoir and William Girling Reservoir all located in the Lee Valley

MOVEMENT OF BOATS FROM GRAFHAM WATER

A non-native species of fresh water shrimp (commonly known as killer shrimps) have been found in Grafham Water and certain restrictions on boat movement have been imposed by AW, DEFRA or other bodies to prevent the spread of these to other locations in the UK. These requirements are prominently displayed on the club premises and will include washing boats and equipment before removal from the Club premises.

Failure to comply with the requirements of these restrictions may lead to expulsion from the event.

SIGNALS MADE ASHORE

RED FLAG or **RED MAROON** means 'If ashore, do not go afloat. If afloat, come ashore immediately.

A BLUE AND WHITE flag indicates that conditions are such that dinghy sailing is not allowed but experienced windsurfers are permitted to sail.

A BLUE AND GREEN flag indicates the presence of BLUE GREEN ALGAE in the reservoir and care should be taken whilst afloat and during launching and recovery of boats

RACING AREA

The prohibited area at the West end of the water is an obstruction. Its boundary is a line of buoys forming its eastern boundary.

Each **fishing boat**, and an area extending 20 metres in any direction from the fishing boat is an obstruction.

A **safety boat** in close attendance to a craft or competitor in difficulty is an obstruction.

EMERGENCY MEETING POINT

If you are involved in an emergency and you need to go to or direct others (including an emergency service such as an ambulance) to the Emergency Meeting Point at the Coxswain's Shed **52° 17.49 N, 000° 18.85 W**. Should aid be needed elsewhere on site, club staff and/or volunteers will divert resources there.

If you call an emergency service, you **must** inform a Staff Member (Coxswain or Office) so that GWSC can invoke its Emergency Protocol.

Grafham Water Sailing Club, Chichester Way, Perry, Cambridgeshire PE28 0BU

Telephone 01480 810478